



Uppsala-Kraków, 2013, Pencil on paper, STANDING PINE

# OGAWA

あなた以外の世界のすべて | 小川信治

# SHINJI

THE WHOLE WORLD WITHOUT YOU

2016 9/7<sup>水</sup> → 10/30<sup>日</sup>

Date : 7 September - 30 October 2016

\*closing day: September 26, October 3

Hours : Sunday to Thursday 10:00 - 18:00

Fridays and Saturdays 10:00 - 20:00

(Admission until 30 minutes before closing time)

Admission : Adults ¥700,

Students (college, university) ¥500,

Children (0 year to highschool) free

\*Admission is free on 18 October.

Organized by Chiba City Museum of Art

Exploring the theme, "What is the world?", Ogawa Shinji (b. 1959) creates works in which he very subtly alters familiar images from Western masterpieces and sightseeing spots, and presents various possibilities for a multilayered world.

Ogawa began with the Without You series, in which he faithfully copied famous pictures by artists such as Leonardo da Vinci and Vermeer and then removed the human figures from them. Next, Ogawa embarked on the Perfect World series, in which he duplicated motifs such as people and buildings and added them to the original photograph or picture postcard; and the Moiré Landscapes series, in which he produced many different landscapes by incorporating architectural styles from various countries and eras into a form that recalled Mont-Saint-Michel. While using traditional techniques such as oil painting and pencil drawing, he has developed a diverse range of works. While intertwined with various elements in each series, Ogawa's multifaceted expressions, marked by his outstanding descriptive ability, are constantly evolving.

In this exhibition, we present many of Ogawa's endeavors from throughout his career. These include the well-received new work Symmetry / Asymmetry, representative series such as Without You, Continuum, and Behind You, and new and recent works that have never before been shown in Japan. Also on display are Interfering Worlds, a series in which landscapes are recombined in various layers to create new landscapes, the video work Pirouette, in which new meanings arise out of the rotation of a given form, and a new installation comprising diverse media.

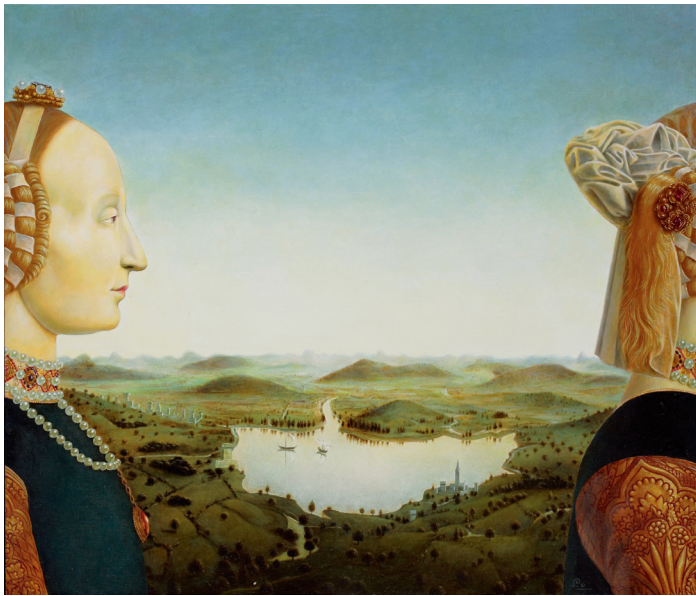
## Biography / CV

Shinji Ogawa 小川信治

Born in 1959 in Yamaguchi, Japan.

Studied at Mie University, diploma in 1983 from Art Department, Faculty of Education.

Lives and works in Nagoya.



*The Duke and Duchess of Urbino Battista Sforza*, 2006, Oil on canvas, Collection of the artist



*The Duke and Duchess of Urbino Federico da Montefeltro*, 2007, Oil on canvas, Collection of the artist

### Selected Solo Exhibitions

- 2015 Shinji Ogawa "Secret Mirror", STANDING PINE, Nagoya
- 2013 Shinji Ogawa Solo Show, Art Basel Hong Kong
- 2008 Perverse Realism , Bunkier Sztuki,Krakow,Poland
- 2006 Shinji Ogawa - Interfering Worlds, The National Museum of Art, Osaka
- 2005 Conversation Piece, Nagoya University Museum, Nagoya
- 2002 Souvenir / Souverain, Toyota Municipal Museum of Art, Aichi

### Selected Group Exhibitions

- 2015 Logical Emotion, Contemporary Art from Japan Museum of Contemporary Art in Krakow, Poland
- 2014 Currents, Japanese Contemporary Art The James Christie Room, Hong Kong
- 2011 The Eyes of Twelve Artists Tokyo Station Gallery, Tokyo  
History in Art Museum of contemporary art in krakow, Poland
- 2010 150ème anniversaire de la création de «l'Angélu» Barbizon,France
- 2008 Behind the seen: secrets of artistic creation, Komaba Museum, The University of Tokyo
- 2007 Line Labyrinthine 2: Graphite on Paper, Megro Museum of Art, Tokyo
- 2004 Light Boxes Dark Rooms, De Pree Art Center and Gallery, Hope College, Holland, MI, U.S.A  
The Copy Age – From Duchamp through Warhol to Morimura, The Museum of Modern Art, Shiga
- 2000 A Vacant Space, Toyota Municipal Museum of Art, Aichi

### Works in Collections

- MOCAM Museum of Contemporary Art in Krakow, Poland
- Takamatsu city museum of Art, Kagawa
- Tokyo Station Gallery,Tokyo
- Bunkier Sztuki, Krakow,Poland
- Okazaki Mindscape Museum, Aichi
- The National Museum Art, Osaka
- The Museum Modern Art, Shiga
- Toyota Municipal Museum of Art
- Tokai City

## 千葉市美術館 Chiba City Museum of Art

3-10-8 Chuo, Chuo-ku, Chiba City, Chiba  
260-8733 JAPAN  
Tel: +81-43-221-2311  
Fax: +81-43-221-2316  
URL: <http://www.ccma-net.jp/english/>